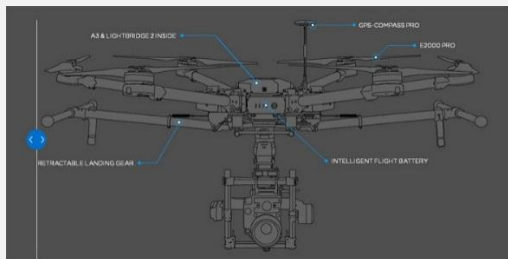


MATRICE 600

The Matrice 600 (M600) is DJI's new flying platform designed for professional aerial photography and industrial applications. It is built to closely integrate with a host of powerful DJI technologies, including the A3 flight controller, Lightbridge 2 transmission system, Intelligent Batteries and Battery Management system, for maximum performance and quick setup.

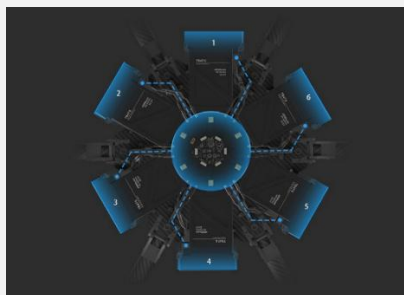
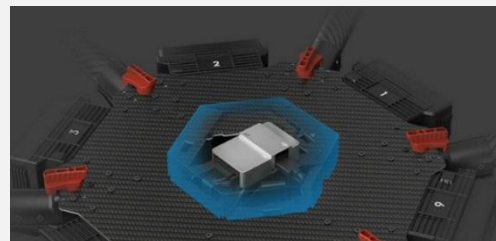


TOTAL INTEGRATION

The modular design makes the M600 easy to set up and ready to use in just minutes. Its dust proof propulsion systems simplify maintenance while actively cooled motors make for reliable operation during extended periods of time. All Zenmuse cameras and gimbals are natively compatible, and a maximum payload of 6 kg allows it to fly the Ronin-MX gimbal and a range of cameras from Micro Four Thirds systems to the RED Epic.

SMART FLIGHT SAFETY

The M600 uses sine-wave driven, intelligent ESCs to ensure it performs accurately, safely and efficiently while A3's self-adaptive flight systems adjust flight parameters automatically based on different payloads. The A3 can be upgraded with two additional GNSS and IMU units to A3 Pro or with D-RTK GNSS for enhanced accuracy. (A3 Pro and D-RTK GNSS are sold separately.)



EXTENDED FLIGHT TIME AND TRANSMISSION RANGE

The M600 features an extended flight time and a 5 km* long-range, ultra-low latency HD image transmission for accurate image composition and capture.

By using 6 small DJI Intelligent Batteries, allowing it to easily be shipped to wherever it is needed. A customized battery management system and power distribution board allows all six batteries to be turned on with one button press, and keeps the system in flight in the event of a failure of a single battery, and allows users to check the battery status in real-time during flight.

Positioning Accuracy with PPK

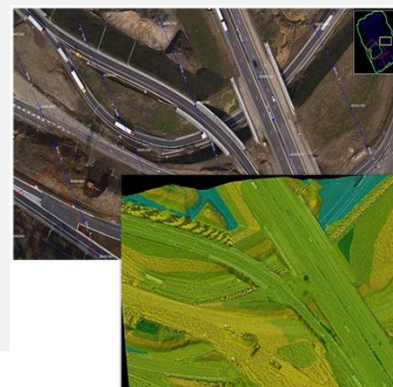
- Camera position accuracy 3cm horizontal and vertical
- Aircraft flight dynamics contribute to absolute camera position accuracy.
- For orthomosaic generation (2D), no GCPs are required
- 1 or 2 GCPs are recommended for accurate 3D modelling to manage camera focal length errors if not calibrated.



UASMaster Software

Modern computer-vision algorithms combined with proven state-of-the-art photogrammetric techniques produce accurate results automatically, with minimal manual interaction:

- Intuitive guided workflow concept even suited for the photogrammetric novice which perfectly integrates interactive context-driven and automated editing capabilities for geo-referencing and point clouds including morphological data creation (e.g. break-line measurements), classification, filtering, and many more.
- Open for any fixed-wing, helicopter-type or other UAS hardware. The technology is optimized for UAS with GPS support (recommended accuracy ± 10 m)
- Fully compatible with Inpho photogrammetry modules from Trimble
- Software rental: UASMaster is also available for rental on a monthly basis



**PT GPS LANDS
INDOSOLUTIONS**

Trimble Authorized Distributor, Training & Service Center

Jl. Ciputat Raya No. 4F Kebayoran Lama, Jakarta 12240 Indonesia
 Telp: +62 21 7238381 Fax: +62 21 7238403
 Email: info@gpslands.co.id
 Website: www.gpslands.co.id

UASMaster

